



**KOTUS**  
ONE STERLING PLACE!



## A MAP OF KOTUS REGION

Taheva, Karula and Mõniste region in  
Southern Estonia – in Valga and Võru counties

stunning pine forests · winding rivers  
Karula National Park · picturesque vaults  
secluded forest lakes · fascinating meadows  
smoke saunas · Home-made food · ancient Koiva  
trees with in-carved crosses – full of memories

[www.kotus.ee](http://www.kotus.ee)

Photo competition of Kotus  
„It's good to live in the  
countryside“

Photo: Heli Sootak

Photo: Piret Puhalainen

### SOME WORDS ABOUT KOTUS REGION

Kotus cooperation network unites entrepreneurs, nonprofit organisations and community core group in the Southern Estonia, who live in Taheva and Karula region in Valga county, and in Mõniste, Antsla and Ahijärve region in Võru county. Kotus network collects and provides information both for the locals and visitors.

Homepage [www.kotus.ee](http://www.kotus.ee) offers more detailed information about tourist packages, places to visit, sightseeings, camping and trekking facilities, besides, about the regional news, events, and members of Kotus cooperation network.

Should you need some additional information about Kotus region or tourist packages, contact us: [kotus.tkm@gmail.com](mailto:kotus.tkm@gmail.com)

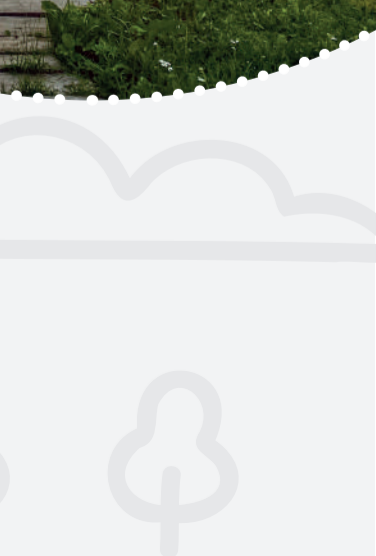
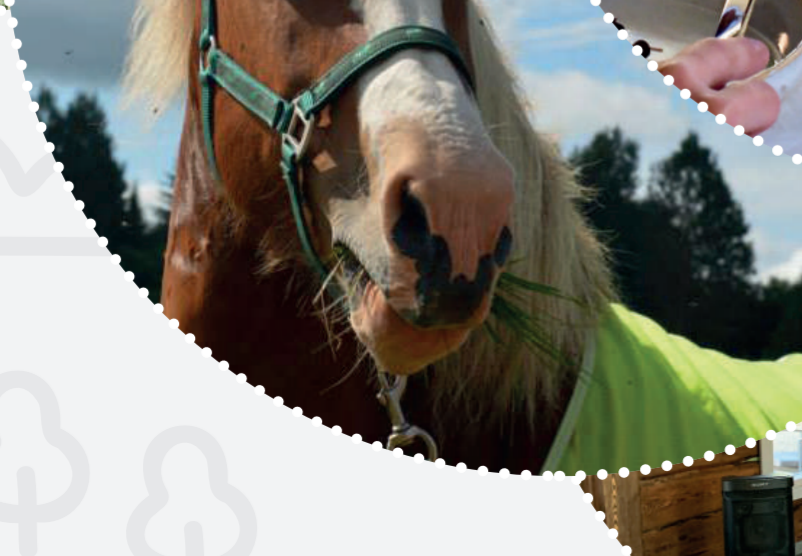
· the southernmost point of Estonia ·  
· enthralling floods · proximity to Latvia  
· healthy herbs · blazing spindles · free-range calves  
· unexpected meetings in the forest ·

The pamphlet was compiled by Taheva Valla Külaude Selts (Taheva Parish Village Society) – together with the Kotus cooperation network within the framework of the project „Direction to change the Kotus cooperation network for self-sufficiency“.



Shops / catering

Accommodation / active holiday



ACCOMMODATION /  
ACTIVE HOLIDAY

1. Kaagjärve Mansion

Kaagjärve village, Valga parish, Valga county  
+372 5557 0788 📍 Kaagjärve Mõis  
Meals: pre-order  
Bed places: up to 35  
The most beautiful rose garden in South Estonia. Coffee, cake and ice cream every day. Accommodation for up to 35 people, banquet hall for up to 100 people - birthdays, trainings, seminars, concerts, weddings. Catering on pre-order. Excursion in the mansion house and park. Sporting opportunities, bicycle rental (10 pcs).

2. Nakatu Tourism Farm

Väike-Nakatu farm, Ringiste village, Valga parish, Valga county  
+372 513 4024 www.nakatu.ee  
📍 Nakatu Turismitalu @ nakaturismitalu  
Meals: pre-order  
Bed places: in summer up to 60  
Extra opportunities: celebrations, weddings, summer days, canoe trips.

3. Karula-Lüllemäe Health and Sport Centre

Kirikumõisa tee street 15, Lüllemäe village, Valga parish, Valga county  
+372 526 9020 www.karulatsk.ee  
📍 Karula-Lüllemäe Tervise- ja Spordikeskus  
Meals: pre-order, kitchen corner available

Bed places: 25

Extra facilities: sport fields, archery, adventure trail, hiking trails, health trail, skiing trails, snowtubing, mountain skiing, sauna, rent of sport equipment.

4. Juku-Peedu trails of Orientation Club

Lüllemäe village, Valga parish, Valga county  
www.jukupeedu.ee/psysirajad

The orienteering trails of Juku-Peedu around Lüllemäe invite you to the forest so that you can exercise in a pleasant way while learning orienteering. At the same time, you will get acquainted with the harsh and beautiful nature, culture and history of Karula.

5. Karula Stay

Värtmäe Farm, Ähijärve Village, Antsla Parish, Võru County  
+372 5853 6568 karulastay@gmail.com

📍 Karula Stay @ karulastay  
Accommodation: We offer accommodation both in winter and in summer in glamping / Sauna accommodation with a traditional sauna experience of Võru County. (We have everything you need to feel comfortable). Catering: We offer breakfast/dinner by prior arrangement. Barbecue facilities on site. Extra opportunities: Hiking trails/lakes nearby, boat rental in summer, fishing equipment rental, ice fishing equipment rental in winter. It is possible to buy honey from the local Värtmäe farm.

6. Järvenukka Rest House

Järvenuka farm, Mähkliki village, Antsla parish, Võru county  
+372 507 6293

📍 Järvenukka Puhkemaja

Meals: kitchen corner available  
Bed places: 8  
Extra opportunities: sauna, swimming place, log-fire site, grill, boat, pets allowed, cash only.

7. Forest Brother's Tourism Farm

Metsavenna farm, Vastse-Roosa village, Rõuge parish, Võru county  
+372 523 0850 www.metsavennatalu.ee 📍 Metsavenna talu  
Meals: pre-order  
Extra facilities: kayaks, in winter – sledding and snowtubing mountain with chairlift, skiing trails, camping.

8. Hüti Conference Farm

Uue-Hüti farm, Hüti village, Rõuge parish, Võru county  
+372 512 2830  
📍 OÜ Hüti Konverentsitalu  
Meals: pre-order  
Bed places: 12+  
Extra opportunities: horse riding, archery, camping. The dogs of the farm have a 30-minute trick program, which can be seen on site or invited to perform at events.

9. Mäe-Kolga Farm

Mäe-Kolga Farm, Villike Village, Rõuge Parish, Võru County  
+372 5373 5537 / +372 5340 9567  
www.maeKolga.com 📍 Mäe-Kolga talu @ maeKolga

Catering: Barbecue facilities, and electric kettle, some dishes and small fridge are available on site. Beds: We offer experience accommodation in glass energy pyramids. We have three different pyramids, which in turn form three separate packages, we can accommodate a total of 6 people. Additional options: Sauna, hot tube with bubbles, possibility to use a large outdoor pool in summer. Outdoor cinema evenings every Saturday in August.

10. Vahi and Vahi's sauna experience

Vahi, Kaliküla, Valga Parish, Valga County  
+372 517 7001  
📍 VAHI @ vahitalu

Catering: shared kitchenette  
Beds: 7 (in the sauna house – 4; in a summer house – 3)  
Sauna experience: An extraordinary experience in Vahi sauna.

Additional options: sauna, grill, refrigerator, campfire place, campfire or picnic basket on request, breakfast, nature walks, pets allowed, payment by card or cash.

11. Saaresalu Summer House

Saaresalu, Hargla Village, Valga parish, Valga county  
+372 509 4694  
www.kotus.ee/saaresalu

Meals: kitchen corner available

📍 Sette Talu

Catering: outdoor kitchenette, barbecue house  
Beds: accommodation in campsites, 32 beds.  
Additional options: Sette Farm offers accommodation in campsites, canoe trips, a party house and sauna rental during the summer season.

Sette Farm canoe trips  
Sette, Lepa Village, Valga Parish, Valga County  
+372 5198 9796  
📍 Elukutsar @ elukutsar

A beautiful farm house is home to a donkey, white ponies and some horses that can be visited. The bravest can also try horse or donkey riding. NB! Visiting by appointment.

📍 Sette Talu

Canoe rental service and canoe trips on Koiva, Vaidva, Peetri and Mustjõgi rivers.

HIKING, LEARNING AND  
CYCLING TRAILS

1. Valga/Valka-Ape "Green Railway" (~55km)

Location: On former Valga-Ape narrow-gauge railway path.  
Starting point: Valga city Railway Station, Valga city or suitable section all over the trail for your own choice. Facilities: Green Railway hiking trail and detours are marked. On the trail there are several information boards, pictures about narrow-gauge railway history, resting point in Hargla village (look point nr 19 under "CAMPING SITES, LOG-FIRE SITES" topic). Best time for hiking is time between May to September.

2. Lüllemäe health trail (4 km)

Location: Lüllemäe Village, Valga Parish, Valga County.  
Starting point: Lüllemäe ski area parking lot.  
Parking: ski area parking lot.

Equipment: the trail is marked with signposts for health trails.

3. Rebäse landscape trail (7km) RMK  
Location: Rebasesõisa village, Valga parish, Valga county.

Starting point: Rebasesõisa. Parking: The parking area of the Rebasesõisa observation tower. Equipment: There are 16 information boards, signs and red coloured signs on trees. The trail is marked with wooden arrow signs and red coloured signs on trees. The pasture border may be under electricity. The observation tower is dilapidated and dangerous. Therefore it is closed for visiting. We apologize!

4. RMK Peraküla-Aegviidu-Ähijärve hiking route / Pähni-Ähijärve section (103 km) RMK  
Location: The hiking trail is in Rõuge and Antsla municipalities in Võru county and Valga municipality in Valga county. Starting point: at Pähni Nature Centre, or at Ähijärve near the visitor centre of Karula National Park. Parking: the parking areas of Pähni Visitor Centre or the visitor centre of Karula National Park. Equipment: the trail is signposted and marked with white-green-white paint marks on trees.

5. Karula short cycling trail (15 km) RMK  
Location: Ähijärve village, Antsla parish Võru county. Starting point: at the guest centre of Karula National Park. Parking: on the parking space of the guest centre of Karula National Park. Equipment: The trail runs in a circular pattern and is marked by tin signs.

6. Karula long cycling trail (38 km) RMK  
Location: Ähijärve village, Antsla parish Võru county. Starting point: at the guest centre of Karula National Park. Parking: on the parking space of the guest centre of Karula National Park. Equipment: The trail runs in a circular pattern and is marked by tin signs.

7. Karula long hiking trail (36 km) RMK  
Location: Ähijärve village, Antsla parish Võru county. Starting point: at the guest centre of Karula National Park. Parking: on the parking space of the guest centre of Karula National Park. Equipment: The trail runs in a circular pattern and is marked by yellow coloured signs on the trees and with tin signs near bigger roads.

8. Ähijärve roads and paths trail (4 km) RMK  
Location: Ähijärve village, Antsla parish, Võru county. Starting point: at the guest centre of Karula National Park. Parking: on the parking space of the guest centre of Karula National Park. Equipment: trail starts at the guest centre of Karula National Park and goes along Ähijärve shore and the old farm road. The trail is equipped with 15 information boards, 2 plank road sections. The trail is marked with wooden signs and red coloured marks on trees.

9. Nature trail for children (0.5 km) RMK

Location: Ähijärve village, Antsla parish Võru county. Starting point: at the guest centre of Karula National Park. Parking: on the parking space of the guest centre of Karula National Park. Equipment: There is a slide, watchtower, swings, sandbox, giant stride on the trail. The trail introduces erratic boulders and rocks, the difference between coniferous and deciduous trees, the most common bird species in the area, soil characteristics and traces of mammal's activity. Activity sheets available at the information point help children to acquire the information. The trail is marked with wooden signs.

10. Perajärve forest trail (4 km) RMK  
Location: Ähijärve village, Antsla parish Võru county. Starting point: at Perajärve log-fire site parking space. Parking: at Perajärve log-fire parking space. Equipment: There are 17 information boards along the trail. The trail is marked with wooden signs and red coloured marks on trees.

11. Learning and hiking trail of the most southeast point of Estonia (4,8 km)  
Location: Vastse-Roosa village, Rõuge municipality, Võru County. Starting point: under a big oak tree near the Naha farm house. Parking: near Naha farm house. On the wet season is the access to the starting point by car difficult. Equipment: There are several information boards along the trail, forest cabin and the most southeast point of Estonia. The trail is marked with red coloured signs.

12. Karula cycling trail (50 km) RMK  
Location: in the forests near the rivers Mustjõe and Koiva, amidst the vaulting landscape of Taheva and Karula region, Valga county. Starting point: at the bottom of Tellungimäe hill, on the cycling trail log-fire site. Parking: at the trail starting point. Facilities: the parking areas of Pähni Visitor Centre or the visitor centre of Karula National Park. Equipment: the trail is signposted and marked with white-green-white paint marks on trees.

13. Mõniste cycling trail (55 km) RMK  
Location: Cycling trail goes through the near-border forests to the southernmost point of Estonia, and back along the other way to the starting point. Starting point: at the bottom of Tellungimäe hill, on the cycling trails log-fire site. Parking: at the trail starting point.

14. Koiva cycling trail (20 km) RMK  
Location: in the vicinity of the rivers Koiva and Mustjõe. Starting point: at the bottom of Tellungimäe hill, on the cycling trail log-fire site. Parking: at the trail starting point. Equipment: near the objects, the trail is equipped with the information boards in Estonian, Latvian and English languages.

15. Estonian-Latvian joined trail of cultural heritage (60 km) RMK  
Location: in Koiva and Mustjõe region. Starting point: at the bottom of Tellungimäe hill, on the cycling trail log-fire site. Parking: at the trail starting point. Equipment: near the objects, the trail is equipped with the information boards in Estonian, Latvian and English languages.

16. Metsavenna log-fire site RMK  
In Vastse-Roosa village, up to 5 tents, parking in the vicinity to the log-fire site. Benches, dry toilet. Fire ground is located on the private land, so, please respect the land owners. Fire ground is provided, first of all, as a stop for hikers who move along RMK Peraküla-Aegviidu-Ähijärve hiking trail.

17. Mõniste Folk Farm Museum  
www.monistemuseum.ee  
+372 789 0622 / +372 5622 8538  
Extra facilities: Sauna, quick washing and drying of clothes, camping, accommodation, kitchenette, shop, meeting rooms, caravan-related services are free of charge for museum visitors.

18. RMK Linnajärve log-fire site RMK  
On shore of Linnajärve lake, up to 2 tents, parking next to the log-fire site, toilet, information board.

19. Green Railway hiking track resting point  
In Hargla Village, behind Hargla Country House of Culture , up to 4 tents, fire-log ground, table-benches, toilet.

20. RMK bike trails log-fire site RMK  
At the bottom of Tellungimäe hill, up to 10 tents, parking, bench-table-shelter, dry toilets, information board.

21. RMK Tellungimäe log-fire site RMK  
In Tellungimäe, up to 10 tents, parking, bench-table-shelter, dry toilets, information board.

22. RMK Alumiati log-fire site RMK  
On shore of Alumiati lake, up to 2 tents, parking next to the road, dry toilet, information board.

23. RMK Kõrgjärve log-fire site RMK  
Near the river Koiva, up to 4 tents, parking, bench-table-shelter, dry toilet, information board.

24. RMK Laagriplatsi log-fire site RMK  
Near the river Koiva, up to 4 tents, parking, bench-table, dry toilet available.

25. RMK Oore camping site RMK  
On shore of Ähijärve lake, up to 6 tents, parking, information board, dry toilet, bench-table-shelter.

26. RMK Veski log-fire site RMK  
On shore of Ähijärve lake, up to 2 tents, limited parking space, information board, bench-table-shelter, dry toilet.

27. RMK Suuremäe camping site RMK  
In the guest centre of Karula National Park, up to 50 tents, parking, information board, 2 toilets, outdoor shower with clean drinking water, bench-table-shelter, sheds, light-posts with sockets, information board.

28. RMK Kõrgjärve log-fire site RMK  
On shore of Ähijärve lake, up to 6 tents, parking, information board, dry toilet, bench-table-shelter.

29. RMK Veski log-fire site RMK  
On shore of Ähijärve lake, up to 2 tents, limited parking space, information board, bench-table-shelter, dry toilet.

30. RMK Suuremäe camping site RMK  
In the guest centre of Karula National Park, up to 50 tents, parking, information board, 2 toilets, outdoor shower with clean drinking water, bench-table-shelter, sheds, light-posts with sockets, information board.

31. RMK Kõrgjärve log-fire site RMK  
Near the river Koiva, up to 4 tents, parking, bench-table-shelter, dry toilet, information board.

32. RMK Laagriplatsi log-fire site RMK  
Near the river Koiva, up to 4 tents, parking, bench-table, dry toilet available.

33. RMK Oore camping site RMK  
On shore of Ähijärve lake, up to 6 tents, parking, information board, dry toilet, bench-table-shelter.

34. RMK Veski log-fire site RMK  
On shore of Ähijärve lake, up to 2 tents, limited parking space, information board, bench-table-shelter, dry toilet.

35. RMK Suuremäe camping site RMK  
In the guest centre of Karula National Park, up to 50 tents, parking, information board, 2 toilets, outdoor shower with clean drinking water, bench-table-shelter, sheds, light-posts with sockets, information board.

36. RMK Kõrgjärve log-fire site RMK  
On shore of Ähijärve lake, up to 6 tents, parking, information board, dry toilet, bench-table-shelter.

37. RMK Veski log-fire site RMK  
On shore of Ähijärve lake, up to 2 tents, limited parking space, information board, bench-table-shelter, dry toilet.

38. RMK Suuremäe camping site RMK  
In the guest centre of Karula National Park, up to 50 tents, parking, information board, 2 toilets, outdoor shower with clean drinking water, bench-table-shelter, sheds, light-posts with sockets, information board.

39. RMK Kõrgjärve log-fire site RMK  
Near the river Koiva, up to 4 tents, parking, bench-table-shelter, dry toilet, information board.

40. RMK Laagriplatsi log-fire site RMK  
Near the river Koiva, up to 4 tents, parking, bench-table, dry toilet available.

41. RMK Oore camping site RMK  
On shore of Ähijärve lake, up to 6 tents, parking, information board, dry toilet, bench-table-shelter.

42. RMK Veski log-fire site RMK  
On shore of Ähijärve lake, up to 2 tents, limited parking space, information board, bench-table-shelter, dry toilet.

43. RMK Suuremäe camping site RMK  
In the guest centre of Karula National Park, up to 50 tents, parking, information board, 2 toilets, outdoor shower with clean drinking water, bench-table-shelter, sheds, light-posts with sockets, information board.

44. RMK Kõrgjärve log-fire site RMK  
On shore of Ähijärve lake, up to 6 tents, parking, information board, dry toilet, bench-table-shelter.

45. RMK Veski log-fire site RMK  
On shore of Ähijärve lake, up to 2 tents, limited parking space, information board, bench-table-shelter, dry toilet.

46. RMK Suuremäe camping site RMK  
In the guest centre of Karula National Park, up to 50 tents, parking, information board, 2 toilets, outdoor shower with clean drinking water, bench-table-shelter, sheds, light-posts with sockets, information board.

47. RMK Kõrgjärve log-fire site RMK  
Near the river Koiva, up to 4 tents, parking, bench-table-shelter, dry toilet, information board.

48. RMK Laagriplatsi log-fire site RMK  
Near the river Koiva, up to 4 tents, parking, bench-table, dry toilet available.

49. RMK Oore camping site RMK  
On shore of Ähijärve lake, up to 6 tents, parking, information board, dry toilet, bench-table-shelter.

50. RMK Veski log-fire site RMK  
On shore of Ähijärve lake, up to 2 tents, limited parking space, information board, bench-table-shelter, dry toilet.

51. RMK Suuremäe camping site RMK  
In the guest centre of Karula National Park, up to 50 tents, parking, information board, 2 toilets, outdoor shower with clean drinking water, bench-table-shelter, sheds, light-posts with sockets, information board.

52. RMK Kõrgjärve log-fire site RMK  
On shore of Ähijärve lake, up to 6 tents, parking, information board, dry toilet, bench-table-shelter.

53. RMK Veski log-fire site RMK  
On shore of Ähijärve lake, up to 2 tents, limited parking space, information board, bench-table-shelter, dry toilet.

54. RMK Suuremäe camping site RMK  
In the guest centre of Karula National Park, up to 50 tents, parking, information board, 2 toilets, outdoor shower with clean drinking water, bench-table-shelter, sheds, light-posts with sockets, information board.

55. RMK Kõrgjärve log-fire site RMK  
Near the river Koiva, up to 4 tents, parking, bench-table-shelter, dry toilet, information board.

56. RMK Laagriplatsi log-fire site RMK  
Near the river Koiva, up to 4 tents, parking, bench-table, dry toilet available.

57. RMK Oore camping site RMK  
On shore of Ähijärve lake, up to 6 tents, parking, information board, dry toilet, bench-table-shelter.

58. RMK Veski log-fire site RMK  
On shore of Ähijärve lake, up to 2 tents, limited parking space, information board, bench-table-shelter, dry toilet.

59. RMK Suuremäe camping site RMK  
In the guest centre of Karula National Park, up to 50 tents, parking, information board, 2 toilets, outdoor shower with clean drinking water, bench-table-shelter, sheds, light-posts with sockets, information board.

60. RMK Kõrgjärve log-fire site RMK  
On shore of Ähijärve lake, up to 6 tents, parking, information board, dry toilet, bench-table-shelter.

61. RMK Veski log-fire site RMK  
On shore of Ähijärve lake, up to 2 tents, limited parking space, information board, bench-table-shelter, dry toilet.

62. RMK Suuremäe camping site RMK  
In the guest centre of Karula National Park, up to 50 tents, parking, information board, 2 toilets, outdoor shower with clean drinking water, bench-table-shelter, sheds, light-posts with sockets, information board.

63. RMK Kõrgjärve log-fire site RMK  
Near the river Koiva, up to 4 tents, parking, bench-table-shelter, dry toilet, information board.

64. RMK Laagriplatsi log-fire site RMK  
Near the river Koiva, up to 4 tents, parking, bench-table, dry toilet available.

65. RMK Oore camping site RMK  
On shore of Ähijärve lake, up to 6 tents, parking, information board, dry toilet, bench-table-shelter.

66. RMK Veski log-fire site RMK  
On shore of Ähijärve lake, up to 2 tents, limited parking space, information board, bench-table-shelter, dry toilet.

67. RMK Suuremäe camping site RMK  
In the guest centre of Karula National Park, up to 50 tents, parking, information board, 2 toilets, outdoor shower with clean drinking water, bench-table-shelter, sheds, light-posts with sockets, information board.

68. RMK Kõrgjärve log-fire site RMK  
On shore of Ähijärve lake, up to 6 tents, parking, information board, dry toilet, bench-table-shelter.

69. RMK Veski log-fire site RMK  
On shore of Ähijärve lake, up to 2 tents, limited parking space, information board, bench-table-shelter, dry toilet.

70. RMK Suuremäe camping site RMK  
In the guest centre of Karula National Park, up to 50 tents, parking, information board, 2 toilets, outdoor shower with clean drinking water, bench-table-shelter, sheds, light-posts with sockets, information board.

71. RMK Kõrgjärve log-fire site RMK  
Near the river Koiva, up to 4 tents, parking, bench-table-shelter, dry toilet, information board.

72. RMK Laagriplatsi log-fire site RMK  
Near the river Koiva, up to 4 tents, parking, bench-table, dry toilet available.

73. RMK Oore camping site RMK  
On shore of Ähijärve lake, up to 6 tents, parking, information board, dry toilet, bench-table-shelter.

74. RMK Veski log-fire site RMK  
On shore of Ähijärve lake, up to 2 tents, limited parking space, information board, bench-table-shelter, dry toilet.

75. RMK Suuremäe camping site RMK  
In the guest centre of Karula National Park, up to 50 tents, parking, information board, 2 toilets, outdoor shower with clean drinking water, bench-table-shelter, sheds, light-posts with sockets, information board.

76. RMK Kõrgjärve log-fire site RMK  
On shore of Ähijärve lake, up to 6 tents, parking, information board, dry toilet, bench-table-shelter.

77. RMK Veski log-fire site RMK  
On shore of Ähijärve lake, up to 2 tents, limited parking space, information board, bench-table-shelter, dry toilet.

78. RMK Suuremäe camping site RMK  
In the guest centre of Karula National Park, up to 50 tents, parking, information board, 2 toilets, outdoor shower with clean drinking water, bench-table-shelter, sheds, light-posts with sockets, information board.

79. RMK Kõrgjärve log-fire site RMK  
Near the river Koiva, up to 4 tents, parking, bench-table-shelter, dry toilet, information board.

80. RMK Laagriplatsi log-fire site RMK  
Near the river Koiva, up to 4 tents, parking, bench-table, dry toilet available.

81. RMK Oore camping site RMK  
On shore of Ähijärve lake, up to 6 tents, parking, information board, dry toilet, bench-table-shelter.

82. RMK Veski log-fire site RMK  
On shore of Ähijärve lake, up to 2 tents, limited parking space, information board, bench-table-shelter, dry toilet.

83. RMK Suuremäe camping site RMK  
In the guest centre of Karula National Park, up to 50 tents, parking, information board, 2 toilets, outdoor shower with clean drinking water, bench-table-shelter, sheds, light-posts with sockets, information board.

84. RMK Kõrgjärve log-fire site RMK  
On shore of Ähijärve lake, up to 6 tents, parking, information board, dry toilet, bench-table-shelter.

85. RMK Veski log-fire site RMK  
On shore of Ähijärve lake, up to 2 tents, limited parking space, information board, bench-table-shelter, dry toilet.

86. RMK Suuremäe camping site RMK  
In the guest centre of Karula National Park, up to 50 tents, parking, information board, 2 toilets, outdoor shower with clean drinking water, bench-table-shelter, sheds, light-posts with sockets, information board.

87. RMK Kõrgjärve log-fire site RMK  
Near the river Koiva, up to 4 tents, parking, bench-table-shelter, dry toilet, information board.

88. RMK Laagriplatsi log-fire site RMK  
Near the river Koiva, up to 4 tents, parking, bench-table, dry toilet available.

89. RMK Oore camping site RMK  
On shore of Ähijärve lake, up to 6 tents, parking, information board, dry toilet, bench-table-shelter.

90. RMK Veski log-fire site RMK  
On shore of Ähijärve lake, up to 2 tents, limited parking space, information board, bench-table-shelter, dry toilet.

91. RMK Suuremäe camping site RMK  
In the guest centre of Karula National Park, up to 50 tents, parking, information board, 2 toilets, outdoor shower with clean drinking water, bench-table-shelter, sheds, light-posts with sockets, information board.

92. RMK Kõrgjärve log-fire site RMK  
On shore of Ähijärve lake, up to 6 tents, parking, information board, dry toilet, bench-table-shelter.

93. RMK Veski log-fire site RMK  
On shore of Ähijärve lake, up to 2 tents, limited parking space, information board, bench-table-shelter, dry toilet.

94. RMK Suuremäe camping site RMK  
In the guest centre of Karula National Park, up to 50 tents, parking, information board, 2 toilets, outdoor shower with clean drinking water, bench-table-shelter, sheds, light-posts with sockets, information board.

95. RMK Kõrgjärve log-fire site RMK  
Near the river Koiva, up to 4 tents, parking, bench-table-shelter, dry toilet, information board.

96. RMK Laagriplatsi log-fire site RMK  
Near the river Koiva, up to 4 tents, parking, bench-table, dry toilet available.

97. RMK Oore camping site RMK  
On shore of Ähijärve lake, up to 6 tents, parking, information board, dry toilet, bench-table-shelter.

98. RMK Veski log-fire site RMK  
On shore of Ähijärve lake, up to 2 tents, limited parking space, information board, bench-table-shelter, dry toilet.

99. RMK Suuremäe camping site RMK  
In the guest centre of Karula National Park, up to 50 tents, parking, information board, 2 toilets, outdoor shower with clean drinking water, bench-table-shelter, sheds, light-posts with sockets, information board.

100. RMK Kõrgjärve log-fire site RMK  
On shore of Ähijärve lake, up to 6 tents, parking, information board, dry toilet, bench-table-shelter.

101. RMK Veski log-fire site RMK  
On shore of Ähijärve lake, up to 2 tents, limited parking space, information board, bench-table-shelter, dry toilet.

102. RMK Suuremäe camping site RMK  
In the guest centre of Karula National Park, up to 50 tents, parking, information board, 2 toilets, outdoor shower with clean drinking water, bench-table-shelter, sheds, light-posts with sockets, information board.

103. RMK Kõrgjärve log-fire site RMK  
Near the river Koiva, up to 4 tents, parking, bench-table-shelter, dry toilet, information board.

104. RMK Laagriplatsi log-fire site RMK  
Near the river Koiva, up to 4 tents, parking, bench-table, dry toilet available.

105. RMK Oore camping site RMK  
On shore of Ähijärve lake, up to 6 tents, parking, information board, dry toilet, bench-table-shelter.

106. RMK Veski log-fire site RMK  
On shore of Ähijärve lake, up to 2